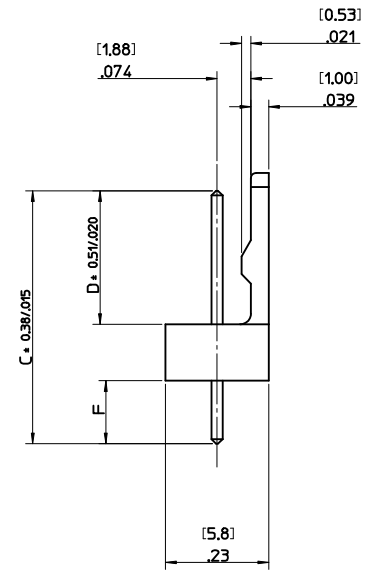
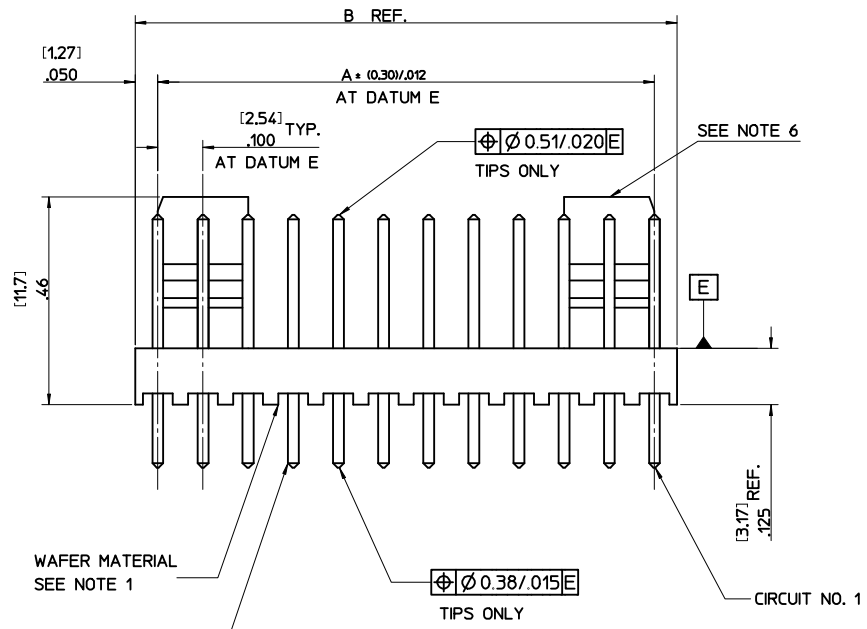
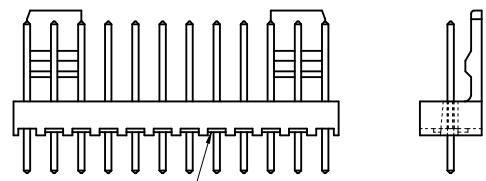


| NO. OF CCTS | DIMN. "A" | DIMN. "B" |
|-------------|--------------------|--------------------|
| 2 | (2.54) .100 | (5.08) .200 |
| 3 | (5.08) .200 | (7.62) .300 |
| 4 | (7.62) .300 | (10.16) .400 |
| 5 | (10.16) .400 | (12.70) .500 |
| 6 | (12.70) .500 | (15.24) .600 |
| 7 | (15.24) .600 | (17.78) .700 |
| 8 | (17.78) .700 | (20.32) .800 |
| 9 | (20.32) .800 | (22.86) .900 |
| 10 | (22.86) .900 | (25.40) 1.000 |
| 11 | (25.40) 1.000 | (27.94) 1.100 |
| 12 | (27.94) 1.100 | (30.48) 1.200 |
| 13 | (30.48) 1.200 | (33.02) 1.300 |
| 14 | (33.02) 1.300 | (35.56) 1.400 |
| 15 | (35.56) 1.400 | (38.10) 1.500 |
| 16 | (38.10) 1.500 | (40.64) 1.600 |
| 17 | (40.64) 1.600 | (43.18) 1.700 |
| 18 | (43.18) 1.700 | (45.72) 1.800 |
| 19 | (45.72) 1.800 | (48.26) 1.900 |
| 20 | (48.26) 1.900 | (50.80) 2.000 |
| 21 | (50.80) 2.000 | (53.34) 2.100 |
| 22 | (53.34) 2.100 | (55.88) 2.200 |
| 23 | (55.88) 2.200 | (58.42) 2.300 |
| 24 | (58.42) 2.300 | (60.86) 2.400 |
| 25 | (60.86) 2.400 | (63.50) 2.500 |
| 26 | (63.50) 2.500 | (66.04) 2.600 |
| 27 | (66.04) 2.600 | (68.58) 2.700 |
| 28 | (68.58) 2.700 | (71.12) 2.800 |



AE-6410- N * (*)

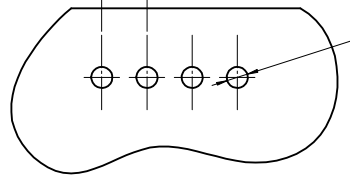
NO. OF CCTS
 WAFER ASSY. OPTION
 PLATING TYPE



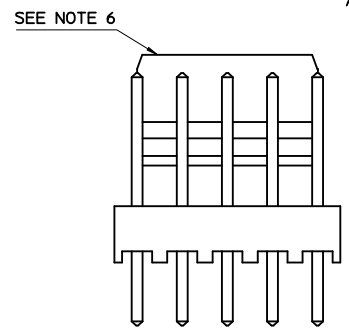
NOTES:

1. WAFER MATERIAL: NYLON, 94V-0
2. PIN PUSH OUT FORCE: (0.907 Kg)/2lbs MIN.
3. WAFERS STACKABLE END TO END WITH (2.54)/.100 BETWEEN END PINS
4. THIS PART CONFORMS TO MOLEX PROD. SPEC. PS99020-0088.
5. PIN SOLDERABILITY PER MOLEX SPEC. NO. 152.
6. SINGLE RAMP ON 2-6 CCTS TWO RAMP ON 7-28 CCTS, AS SHOWN.
7. PRODUCT SPECIFICATION: PS-99020-0087
8. PCB THICKNESS 1.6MM

[2.54 ± 0.05] TYP
 .100 ± 0.02
 NON-ACCUM.
 φ [1.19 ± 0.05] TYP
 0.47 ± 0.02



RECOMMENDED P.C.B. HOLE DIMENSIONS (STANDARD SERIES)



| ADD VOIDED OPTION | QUALITY SYMBOLS | GENERAL TOLERANCES (UNLESS SPECIFIED) | | DIMENSION STYLE | | SCALE | DESIGN UNITS | THIRD ANGLE PROJECTION |
|--|-----------------|---|------------|-----------------|----------|--------------|--------------|------------------------|
| | | mm | INCH | MM/IN | TITLE | | | |
| EC NO: E2009-0413 DRAWN: BMAGUIRE 2009/02/24 CHKD: APPR: BMAGUIRE 2009/02/24 REV | | 4 PLACES ± --- ± --- | | DRAWN BY | DATE | 4:1 | METRIC | |
| | | 3 PLACES ± --- ± .010 | | T. MAHON | 28/01/03 | | | |
| | | 2 PLACES ± 0.25 ± .014 | | CHECKED BY | DATE | | | |
| | | 1 PLACE ± 0.35 ± --- | | BMAGUIRE | 28/01/03 | | | |
| | | ANGULAR ± .5 ° | | APPROVED BY | DATE | | | |
| DRAFT WHERE APPLICABLE MUST REMAIN WITHIN DIMENSIONS | | JDENNEHY | 2005/03/11 | MATERIAL NO. | | DOCUMENT NO. | | SHEET NO. |
| | | SEE CHART | | MOLEX | | SDAE-6410-N | | 1 OF 4 |
| | | THIS DRAWING CONTAINS INFORMATION THAT IS PROPRIETARY TO MOLEX INCORPORATED AND SHOULD NOT BE USED WITHOUT WRITTEN PERMISSION | | | | | | |

| ENG. NO. | AE-6410-NA (102) | | AE-6410-NC (102) | | AE-6410-ND (102) | | AE-6410-NH (102) | | AE-6410-NJ (102) | | AE-6410-NL (102) | | |
|-----------------|--|------------------|--|------------------|--|------------------|--|------------------|--|------------------|--|------------------|------------|
| DIMN. "D" | (7.50 ±0.25) .295 ±.010 | | (7.14 ±0.25) .281 ±.010 | | (8.05 ±0.25) .317 ±.010 | | (7.49 ±0.25) .295 ±.010 | | (18.80 ±0.38) .740 ±.015 | | (8.50 ±0.38) .335 ±.015 | | |
| DIMN. "C" | (14.22) / .560 | | (20.32) / .800 | | (14.22) / .560 | | (14.98) / .590 | | (25.40) / 1.000 | | (23.80) / .937 | | |
| DIMN. "F" | (3.56) / .140 REF | | (10.00) / .394 REF | | (2.99) .118 REF | | (4.32) / .170 REF | | (3.43) / .135 REF | | (12.13) / .477 REF | | |
| PLATING | TIN MIN. (0.005)/.0002 OVER (0.0025)/.0001 COPPER MIN. | | TIN MIN. (0.005)/.0002 OVER (0.0025)/.0001 COPPER MIN. | | TIN MIN. (0.005)/.0002 OVER (0.0025)/.0001 COPPER MIN. | | TIN MIN. (0.005)/.0002 OVER (0.0025)/.0001 COPPER MIN. | | TIN MIN. (0.005)/.0002 OVER (0.0025)/.0001 COPPER MIN. | | TIN MIN. (0.005)/.0002 OVER (0.0025)/.0001 COPPER MIN. | | |
| NO. OF CIRCUITS | 2 | AE-6410-2A(102) | 22-27-2021 | AE-6410-2C(102) | 38-00-6292 | AE-6410-2D(102) | 38-00-5882 | AE-6410-2H(102) | 38-00-6754 | AE-6410-2J(102) | NOT TOOLED | AE-6410-2L(102) | NOT TOOLED |
| | 3 | 3 A(102) | ▲ 2031 | 3 C(102) | ▲ 6293 | 3 D(102) | ▲ 5883 | 3 H(102) | NOT TOOLED | 3 J(102) | NOT TOOLED | L(102) | ▲ |
| | 4 | 4 A(102) | 2041 | 4 C(102) | 6294 | 4 D(102) | 5884 | 4 H(102) | 22-27-2046 | 4 J(102) | NOT TOOLED | L(102) | |
| | 5 | 5 A(102) | 2051 | 5 C(102) | 6295 | 5 D(102) | 5885 | 5 H(102) | NOT TOOLED | 5 J(102) | 22-27-2057 | L(102) | |
| | 6 | 6 A(102) | 2061 | 6 C(102) | 6296 | 6 D(102) | 5886 | 6 H(102) | ▲ | 6 J(102) | NOT TOOLED | L(102) | |
| | 7 | 7 A(102) | 2071 | 7 C(102) | 6297 | 7 D(102) | 5887 | 7 H(102) | | 7 J(102) | NOT TOOLED | L(102) | |
| | 8 | 8 A(102) | 2081 | 8 C(102) | 6298 | 8 D(102) | 5888 | 8 H(102) | | 8 J(102) | 22-27-2087 | L(102) | |
| | 9 | 9 A(102) | 2091 | 9 C(102) | 6299 | 9 D(102) | 5889 | 9 H(102) | | 9 J(102) | NOT TOOLED | L(102) | |
| | 10 | 10 A(102) | 2101 | 10 C(102) | 6300 | 10 D(102) | 5890 | 10 H(102) | | 10 J(102) | ▲ | L(102) | |
| | 11 | 11 A(102) | 2111 | 11 C(102) | 6301 | 11 D(102) | 5891 | 11 H(102) | NOT TOOLED | 11 J(102) | | L(102) | |
| | 12 | 12 A(102) | 2121 | 12 C(102) | 6302 | 12 D(102) | 5892 | 12 H(102) | 22-27-2126 | 12 J(102) | | L(102) | |
| | 13 | 13 A(102) | 2131 | 13 C(102) | 6303 | 13 D(102) | 5893 | 13 H(102) | NOT TOOLED | 13 J(102) | | L(102) | ▼ |
| | 14 | 14 A(102) | 2141 | 14 C(102) | 6304 | 14 D(102) | 5894 | 14 H(102) | ▲ | 14 J(102) | | L(102) | NOT TOOLED |
| | 15 | 15 A(102) | 2151 | 15 C(102) | 6305 | 15 D(102) | 5895 | 15 H(102) | | 15 J(102) | | L(102) | 38-00-1736 |
| | 16 | 16 A(102) | 2161 | 16 C(102) | 6306 | 16 D(102) | 5896 | 16 H(102) | | 16 J(102) | | L(102) | NOT TOOLED |
| | 17 | 17 A(102) | 2171 | 17 C(102) | 6307 | 17 D(102) | 5897 | 17 H(102) | | 17 J(102) | | L(102) | ▲ |
| | 18 | 18 A(102) | 2181 | 18 C(102) | 6308 | 18 D(102) | 5898 | 18 H(102) | | 18 J(102) | | L(102) | |
| | 19 | 19 A(102) | 2191 | 19 C(102) | ▼ 6309 | 19 D(102) | 5899 | 19 H(102) | | 19 J(102) | | L(102) | |
| | 20 | 20 A(102) | 2201 | 20 C(102) | 38-00-6310 | 20 D(102) | 5900 | 20 H(102) | | 20 J(102) | | L(102) | |
| | 21 | 21 A(102) | 2211 | 21 C(102) | NOT TOOLED | 21 D(102) | 5901 | 21 H(102) | | 21 J(102) | | L(102) | |
| | 22 | 22 A(102) | 2221 | 22 C(102) | ▲ | 22 D(102) | 5902 | 22 H(102) | | 22 J(102) | | L(102) | |
| | 23 | 23 A(102) | 2231 | 23 C(102) | | 23 D(102) | 5903 | 23 H(102) | | 23 J(102) | | L(102) | |
| | 24 | 24 A(102) | 2241 | 24 C(102) | | 24 D(102) | 5904 | 24 H(102) | | 24 J(102) | | L(102) | |
| | 25 | 25 A(102) | 2251 | 25 C(102) | | 25 D(102) | 5905 | 25 H(102) | | 25 J(102) | | L(102) | |
| | 26 | 26 A(102) | 2261 | 26 C(102) | | 26 D(102) | 5906 | 26 H(102) | | 26 J(102) | | L(102) | |
| | 27 | 27 A(102) | ▼ 2271 | 27 C(102) | ▼ | 27 D(102) | ▼ 5907 | 27 H(102) | ▼ | 27 J(102) | ▼ | L(102) | ▼ |
| | 28 | AE-6410-28A(102) | 22-27-2281 | AE-6410-28C(102) | NOT TOOLED | AE-6410-28D(102) | 38-00-5908 | AE-6410-28H(102) | NOT TOOLED | AE-6410-28J(102) | NOT TOOLED | AE-6410-28L(102) | NOT TOOLED |

| | | | | | | | |
|--|-------------------------------|---|--|--|---|------------------------|--|
| SEE SHEET 1 EC NO: E2009-0413 DRAWN: BMAGUIRE 2009/07/24 CHKD: 2009/07/24 APPR: BMAGUIRE 2009/07/24 REV: BB | QUALITY SYMBOLS ▽=0 ▽=0 | GENERAL TOLERANCES (UNLESS SPECIFIED) | DIMENSION STYLE MM/IN | SCALE 4:1 | DESIGN UNITS METRIC | THIRD ANGLE PROJECTION | |
| | | mm INCH | DRAWN BY T. MAHON | DATE 28/01/03 | TITLE WAFER, FRICTION LOCK KK (2.54)/.100 FOR (0.64)/.025 SQ. PINS | | |
| | | 4 PLACES ± --- ± --- 3 PLACES ± --- ± .010 2 PLACES ± 0.25 ± .014 1 PLACE ± 0.35 ± --- | APPROVED BY J DENNEHY | DATE 28/01/03 | MATERIAL NO. SDAE-6410-N | | |
| | | ANGULAR ± .5 ° | DRAFT WHERE APPLICABLE MUST REMAIN WITHIN DIMENSIONS | DATE 2005/03/11 | MOLEX INCORPORATED DOCUMENT NO. SDAE-6410-N | | |
| | | | SIZE A2 | THIS DRAWING CONTAINS INFORMATION THAT IS PROPRIETARY TO MOLEX INCORPORATED AND SHOULD NOT BE USED WITHOUT WRITTEN PERMISSION | | | |
| | | | | SHEET NO. 2 OF 4 | | | |

| ENG. NO. | AE-6410-NA (501) | AE-6410-NA (516) | AE-6410-NK (516) | AE-6410-NC (501) | AE-6410-NA (509) | AE-6410-NS (501) | AE-6410-NA (503) | | |
|-----------------|---|--|--|--|--|--|--|----------------------------|-----------------------------|
| DIMN. "D" | (7.50 ±0.25) .295 ±.010 | (7.50 ±0.25) .295 ±.010 | (9.22) REF .363 | (7.14 ±0.25) .281 ±.010 | (7.50 ±0.25) .295 ±.010 | (7.50 ±0.25) .295 ±.010 | (7.50 ±0.25) .295 ±.010 | | |
| DIMN. "C" | (14.22) / .560 | (14.22) / .560 | (15.88) / .625 | (20.32) / .800 | (14.22) / .560 | (16.51) / .649 | (14.22) / .560 | | |
| DIMN. "F" | (3.56) / .140 REF | (3.56) / .140 REF | (3.48 ±0.25) .137 ±.010 | (10.00) / .394 REF | (3.56) / .140 REF | (5.84) / .230 REF | (3.56) / .140 REF | | |
| PLATING | GOLD MIN. (0.0005)/.000020 OVER (0.00076)/.000030 NICKEL MIN. | GOLD MIN. (0.00025)/.000010 OVER (0.00076)/.000030 NICKEL MIN. | GOLD MIN. (0.00025)/.000010 OVER (0.00076)/.000030 NICKEL MIN. | GOLD MIN. (0.00051)/.000020 OVER (0.00076)/.000030 NICKEL MIN. | GOLD MIN. (0.00127)/.000050 OVER (0.00076)/.000030 NICKEL MIN. | GOLD MIN. (0.00051)/.000020 OVER (0.00076)/.000030 NICKEL MIN. | GOLD MIN. (0.00076)/.000030 OVER (0.00127)/.000050 NICKEL MIN. | | |
| NO. OF CIRCUITS | 2 | AE-6410-2A(501) 22-29-2021 | AE-6410-2A(516) 22-29-2022 | AE-6410-2K(516) 38-00-0932 | AE-6410-2C(501) NOT TOOLED | AE-6410-2A(509) 38-00-7250 | NOT TOOLED | AE-6410-2A(503) 38-00-7062 | |
| | 3 | 3 A(501) 2031 | 3 A(516) 2032 | 3 K(516) 0933 | 3 C(501) 38-00-5909 | 3 A(509) NOT TOOLED | NOT TOOLED | 3 A(503) 7063 | |
| | 4 | 4 A(501) 2041 | 4 A(516) 2042 | 4 K(516) 0934 | 4 C(501) NOT TOOLED | 4 A(509) 38-00-7251 | AE-6410-2S(509) 38-00-7666 | 4 A 7064 | |
| | 5 | 5 A(501) 2051 | 5 A(516) 2052 | 5 K(516) 0935 | 5 C(501) ↑ | 5 A(509) NOT TOOLED | | 5 A 7065 | |
| | 6 | 6 A(501) 2061 | 6 A(516) 2062 | 6 K(516) 0936 | 6 C(501) | 6 A(509) ↑ | 6 S(501) 38-00-7667 | 6 A 7066 | |
| | 7 | 7 A(501) 2071 | 7 A(516) 2072 | 7 K(516) 0937 | 7 C(501) | 7 A(509) | NOT TOOLED | 7 A 7067 | |
| | 8 | 8 A(501) 2081 | 8 A(516) 2082 | 8 K(516) 0938 | 8 C(501) | 8 A(509) | ↑ | 8 A 38-00-7068 | |
| | 9 | 9 A(501) 2091 | 9 A(516) 2092 | 9 K(516) 0939 | 9 C(501) | 9 A(509) | | 9 A NOT TOOLED | |
| | 10 | 10 A(501) 2101 | 10 A(516) 2102 | 10 K(516) 0940 | 10 C(501) | 10 A(509) | | 10 A NOT TOOLED | |
| | 11 | 11 A(501) 2111 | 11 A(516) 2112 | 11 K(516) 0941 | 11 C(501) | 11 A(509) | | 11 A NOT TOOLED | |
| | 12 | 12 A(501) 2121 | 12 A(516) 2122 | 12 K(516) 0942 | 12 C(501) | 12 A(509) | | 12 A 38-00-7072 | |
| | 13 | 13 A(501) 2131 | 13 A(516) 2132 | 13 K(516) 0943 | 13 C(501) | 13 A(509) | | 13 A NOT TOOLED | |
| | 14 | 14 A(501) 2141 | 14 A(516) 2142 | 14 K(516) 0944 | 14 C(501) | 14 A(509) | | 14 A 38-00-7074 | |
| | 15 | 15 A(501) 2151 | 15 A(516) 2152 | 15 K(516) 0945 | 15 C(501) | 15 A(509) | | 15 A NOT TOOLED | |
| | 16 | 16 A(501) 2161 | 16 A(516) 2162 | 16 K(516) 0946 | 16 C(501) | 16 A(509) | | 16 A ↑ | |
| | 17 | 17 A(501) 2171 | 17 A(516) 2172 | 17 K(516) 0947 | 17 C(501) | 17 A(509) | | 17 A | |
| | 18 | 18 A(501) 2181 | 18 A(516) 2182 | 18 K(516) 0948 | 18 C(501) | 18 A(509) | | 18 A ↓ | |
| | 19 | 19 A(501) 2191 | 19 A(516) 2192 | 19 K(516) 0949 | 19 C(501) | 19 A(509) | | 19 A NOT TOOLED | |
| | 20 | 20 A(501) 2201 | 20 A(516) 2202 | 20 K(516) 0950 | 20 C(501) | 20 A(509) | | 20 A 38-00-7080 | |
| | 21 | 21 A(501) 2211 | 21 A(516) 2212 | 21 K(516) 0951 | 21 C(501) | 21 A(509) | | 21 A NOT TOOLED | |
| | 22 | 22 A(501) 2221 | 22 A(516) 2222 | 22 K(516) 0952 | 22 C(501) | 22 A(509) | | 22 A NOT TOOLED | |
| | 23 | 23 A(501) 2231 | 23 A(516) 2232 | 23 K(516) 0953 | 23 C(501) | 23 A(509) | | 23 A NOT TOOLED | |
| | 24 | 24 A(501) 2241 | 24 A(516) 2242 | 24 K(516) 0954 | 24 C(501) | 24 A(509) | | 24 A 38-00-0441 | |
| | 25 | 25 A(501) 2251 | 25 A(516) 2252 | 25 K(516) 0955 | 25 C(501) | 25 A(509) | | 25 A NOT TOOLED | |
| | 26 | 26 A(501) 2261 | 26 A(516) 2262 | 26 K(516) 0956 | 26 C(501) | 26 A(509) | | 26 A ↓ | |
| | 27 | 27 A(501) 2271 | 27 A(516) 2272 | 27 K(516) 0957 | 27 C(501) ↓ | 27 A(509) ↓ | | 27 A(503) ↓ | |
| | 28 | AE-6410-28A(501) 22-29-2281 | AE-6410-28A(516) 22-29-2282 | AE-6410-28K(516) 38-00-0958 | AE-6410-28C(501) NOT TOOLED | AE-6410-28A(509) NOT TOOLED | | NOT TOOLED | AE-6410-28A(503) NOT TOOLED |

| | | | | | | | |
|--|--|---|----------------------------------|---------------------|--|------------------------|--|
| SEE SHEET 1 EC NO: E2009-0413 DRAWN: BMAGUIRE 2009/02/24 CHKD: 2009/02/24 APPR: BMAGUIRE 2009/02/24 | QUALITY SYMBOLS ▽=0 ▽=0 | GENERAL TOLERANCES (UNLESS SPECIFIED) mm INCH 4 PLACES ± --- ± --- 3 PLACES ± --- ± .010 2 PLACES ± 0.25 ± .014 1 PLACE ± 0.35 ± --- ANGULAR ± .5 ° | DIMENSION STYLE MM/IN | SCALE 4:1 | DESIGN UNITS METRIC | THIRD ANGLE PROJECTION | |
| | DRAWN BY T. MAHON | DATE 28/01/03 | CHECKED BY BMAGUIRE | DATE 28/01/03 | TITLE WAFER, FRICTION LOCK KK (2.54)/.100 FOR (0.64)/.025 SQ. PINS | | |
| | APPROVED BY JDENNEHY | DATE 2005/03/11 | MATERIAL NO. SEE CHART | | DOCUMENT NO. SDAE-6410-N | | |
| | DRAFT WHERE APPLICABLE MUST REMAIN WITHIN DIMENSIONS | | SIZE A2 | | THIS DRAWING CONTAINS INFORMATION THAT IS PROPRIETARY TO MOLEX INCORPORATED AND SHOULD NOT BE USED WITHOUT WRITTEN PERMISSION | | |

VOIDED OPTION

| PART No. | ENG No. | CKT SIZE | VOID LOCATION | DIM A | DIM B | DIM D |
|------------|-------------|----------|---------------|-----------------------------|-----------------|---------------|
| 38-00-7222 | A-6410-3A-2 | 3 | 2 | (5.08 ±0.10) / .200 ±.004 | (7.62) / .300 | (7.50) / .295 |
| 4749 | -4A-3 | 4 | 3 | (7.62 ±0.13) / .300 ±.005 | (10.16) / .400 | (7.50) / .295 |
| 0611 | -5A-3 | 5 | 3 | (10.16 ±0.13) / .400 ±.005 | (12.70) / .500 | (7.50) / .295 |
| 0089 | -6A-3 | 6 | 3 | (12.70 ±0.13) / .500 ±.005 | (15.24) / .600 | (7.50) / .295 |
| 0090 | -6A-51 | 6 | 3,4,5 | (12.70 ±0.13) / .500 ±.005 | (15.24) / .600 | (7.50) / .295 |
| 5370 | -15A-02 | 15 | 2 | (35.56 ±0.13) / 1.400 ±.005 | (38.10) / 1.500 | (7.50) / .295 |
| 5371 | -19A-12 | 19 | 12 | (45.72 ±0.15) / 1.800 ±.006 | (48.26) / 1.900 | (7.50) / .295 |
| 7688 | -12A-09 | 12 | 9 | (27.94 ±0.13) / 1.100 ±.005 | (30.48) / 1.200 | (7.50) / .295 |
| | | | | | | |

| | | | | | | | | | | | | | | | | | | | | | | |
|---|--|--------------------|-------------------------------|---|---|----|------|----------|-------|-------|----------|-------|--------|----------|--------|--------|---------|--------|-------|---|--|---|
| ADD VOIDED OPTION EC NO: E2009-0413 DRWN: BMAGUIRE CHKD: APPR: BMAGUIRE BB | 2009/02/24 2009/02/24 2009/02/24 | DESCRIPTION REV | QUALITY SYMBOLS ▽=0 ◻=0 | GENERAL TOLERANCES (UNLESS SPECIFIED) <table border="1" style="width: 100%; border-collapse: collapse;"> <tr> <td></td> <td>mm</td> <td>INCH</td> </tr> <tr> <td>4 PLACES</td> <td>± ---</td> <td>± ---</td> </tr> <tr> <td>3 PLACES</td> <td>± ---</td> <td>± .010</td> </tr> <tr> <td>2 PLACES</td> <td>± 0.25</td> <td>± .014</td> </tr> <tr> <td>1 PLACE</td> <td>± 0.35</td> <td>± ---</td> </tr> </table> ANGULAR ± .5 ° | | mm | INCH | 4 PLACES | ± --- | ± --- | 3 PLACES | ± --- | ± .010 | 2 PLACES | ± 0.25 | ± .014 | 1 PLACE | ± 0.35 | ± --- | DIMENSION STYLE MM/IN DRAWN BY: T. MAHON DATE: 28/01/03 CHECKED BY: BMAGUIRE DATE: 28/01/03 APPROVED BY: JDENNEHY DATE: 2005/03/11 MATERIAL NO. | SCALE: 4:1 DESIGN UNITS: METRIC THIRD ANGLE PROJECTION | TITLE: WAFER, FRICTION LOCK KK (2.54) / .100 FOR (0.64) / .025 SQ. PINS MOLEX INCORPORATED DOCUMENT NO. SDAE-6410-N SHEET NO. 4 OF 4 |
| | | mm | INCH | | | | | | | | | | | | | | | | | | | |
| | 4 PLACES | ± --- | ± --- | | | | | | | | | | | | | | | | | | | |
| | 3 PLACES | ± --- | ± .010 | | | | | | | | | | | | | | | | | | | |
| 2 PLACES | ± 0.25 | ± .014 | | | | | | | | | | | | | | | | | | | | |
| 1 PLACE | ± 0.35 | ± --- | | | | | | | | | | | | | | | | | | | | |
| DRAFT WHERE APPLICABLE MUST REMAIN WITHIN DIMENSIONS | | | | SEE TABLE | THIS DRAWING CONTAINS INFORMATION THAT IS PROPRIETARY TO MOLEX INCORPORATED AND SHOULD NOT BE USED WITHOUT WRITTEN PERMISSION | | | | | | | | | | | | | | | | | |
| | | | | SIZE: A3 | | | | | | | | | | | | | | | | | | |
| | | | | | | | | | | | | | | | | | | | | | | |