

SMT/THM TEST POINTS

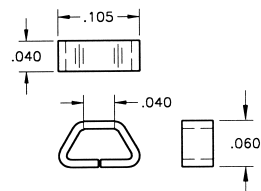
Designers' Choice



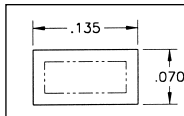
(SMT) SURFACE MOUNT TEST POINTS ON TAPE & REEL

MINIATURE

- Ultra low profile ideally suited for advanced surface mount printed circuit board applications
- Designed for long life and durability
- Manufactured using flat wire to provide a large mounting surface area
- Ideal for use with miniature probes, clips, and hooks
- Efficient, safe, board level testing



Pad Layout



SPECIFICATIONS

Contact Material: .010 Phosphor Bronze
Contact Finish: Tin Lead

Tape Material: 8mm wide; 4mm pitch; conductive polycarbonate carrier tape meets ANSI/EIA-481 standard

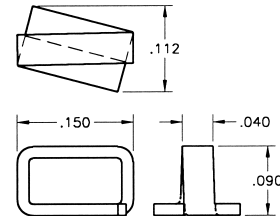
Reel Size: Cat. No. 5015: 7 inches – 1000 pieces per reel
Cat. No. 5017: 13 inches – 5000 pieces per reel

CAT. NO. 5015 (Tape & Reel)

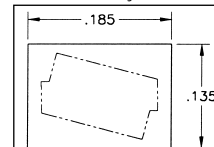
CAT. NO. 5017 (Tape & Reel)

COMPACT

- Unique design provides exceptional strength and durability
- Simplifies testing on dense SMT circuit boards
- Ideal for use with most standard probes, clips and hooks
- Efficient, safe, board level testing



Pad Layout



SPECIFICATIONS

Contact Material: .015 Phosphor Bronze
Contact Finish: Tin Lead

Tape Material: 12mm wide; 4mm pitch; conductive polycarbonate carrier tape meets ANSI/EIA-481 standard

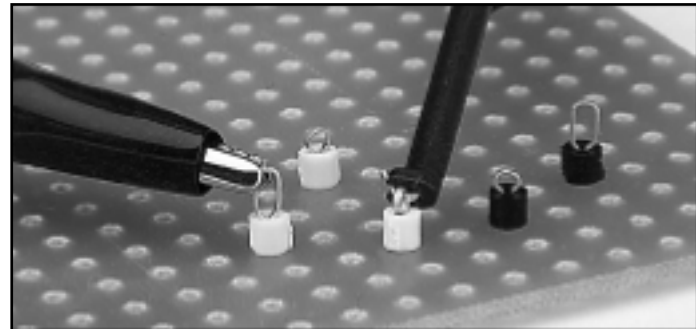
Reel Size: Cat. No. 5016: 7 inches – 1000 pieces per reel
Cat. No. 5018: 13 inches – 5000 pieces per reel

CAT. NO. 5016 (Tape & Reel)

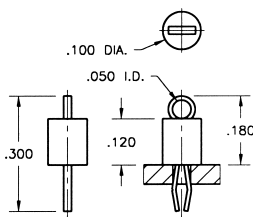
CAT. NO. 5018 (Tape & Reel)

(THM) THRU-HOLE MOUNT TEST POINTS – COLOR KEYED

- Color keyed for visibility and quick identification
- Economical choice for PC test point terminations
- Snap-fit mounting provides positive retention for wave soldering
- Wire form loop for safe, non-slip testing
- Space saving, ultra low and low profile designs
- High profile design for difficult to reach applications
- Suitable for high density packaging on .062 and .093 PC boards
- Practical replacement for wire-wrap posts and turrets
- Secure grip for J hooks, EZ hooks, grabbers, alligator clips, tips or probes
- Plastic base strengthens terminal for positive holding power
- Ideal for reliable production testing and field service troubleshooting



MINIATURE



CAT. NO.	BASE COLOR
5000	RED
5001	BLACK
5002	WHITE
5003	ORANGE
5004	YELLOW

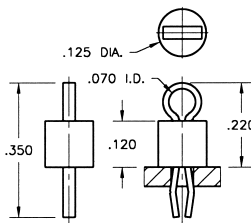
SPECIFICATIONS

Terminal: .010 x .020 Phosphor Bronze Wire, Tin Plate
Base: Valox, UL 94V-0

MOUNTING DETAIL

Mtg. Hole: .040 Diameter
Mtg. Centers: .100 x .100

COMPACT



CAT. NO.	BASE COLOR
5005	RED
5006	BLACK
5007	WHITE
5008	ORANGE
5009	YELLOW

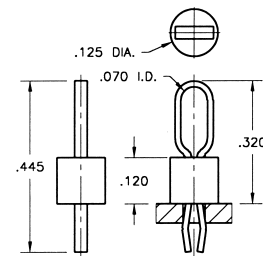
SPECIFICATIONS

Terminal: .015 x .032 Phosphor Bronze Wire, Tin Plate
Base: Valox, UL 94V-0

MOUNTING DETAIL

Mtg. Hole: .063 Diameter
Mtg. Centers: .125 x .125

MULTIPURPOSE



CAT. NO.	BASE COLOR
5010	RED
5011	BLACK
5012	WHITE
5013	ORANGE
5014	YELLOW

SPECIFICATIONS

Terminal: .015 x .032 Phosphor Bronze Wire, Tin Plate
Base: Valox, UL 94V-0

MOUNTING DETAIL

Mtg. Hole: .063 Diameter
Mtg. Centers: .125 x .125